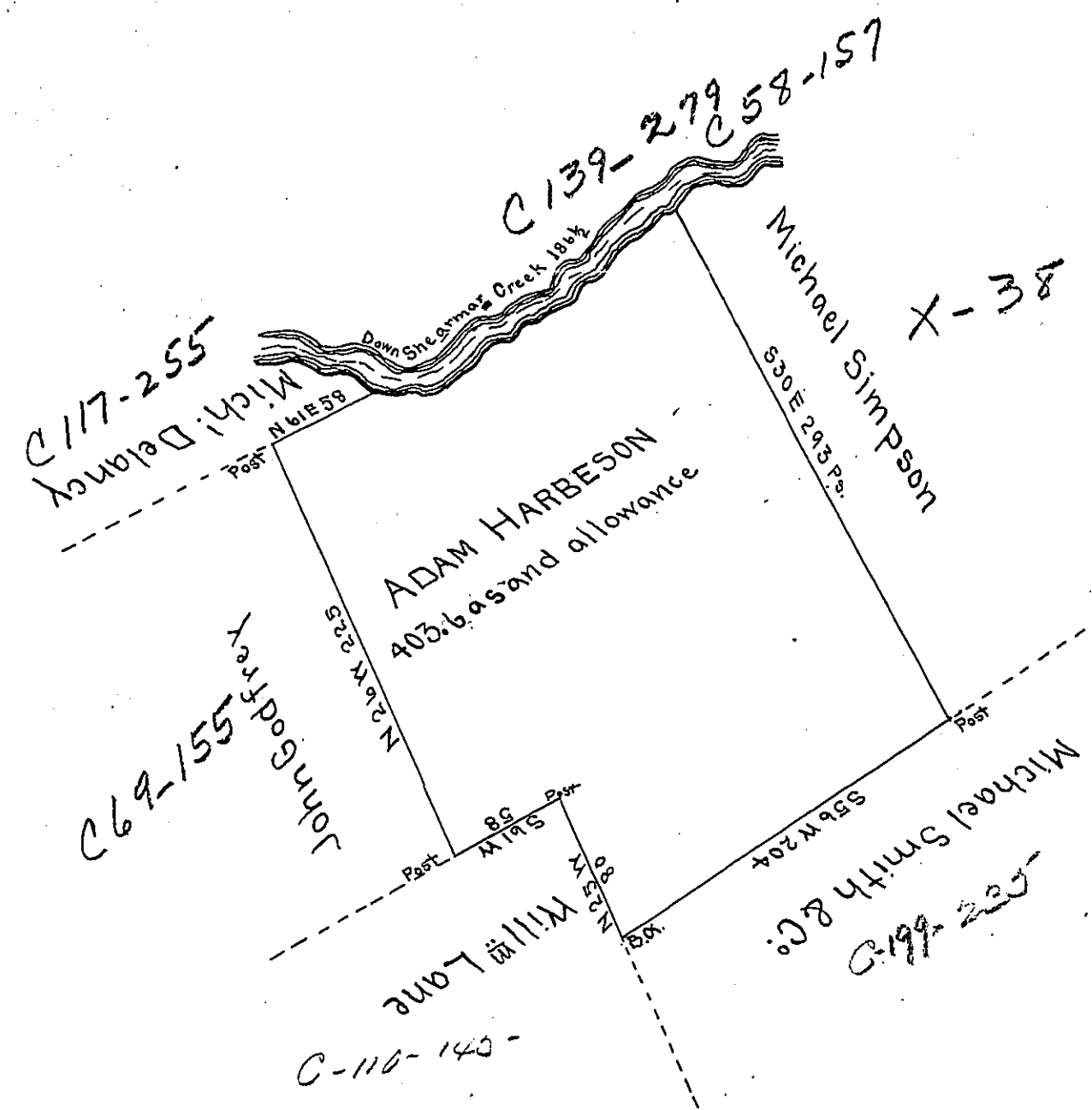


COURSES AND DISTANCES  
 DOWN SHERMANS CREEK  
 N 89 E 34 1/2  
 N 55 E 76  
 N 50 E 76  
 186 1/2



A Draught of a Tract of Land situate in Rye Township Cumberland County  
 Containing 403.6 ac. and the usual allowance of six p cent for roads &c. Sur-  
 veyed the 19<sup>th</sup> day of August 1794 to Adam Harbeson in pursuance of a warrant  
 dated the first day of February 1794. I Certify that the above is a Copy of a  
 survey remaining in the Dep<sup>y</sup> Sur<sup>o</sup> office Surv<sup>d</sup> by or under the Direction  
 of Sam<sup>l</sup> Lyon D.S. August 31<sup>st</sup> 1807.

W<sup>m</sup> Wheeler D.S.

To Sam<sup>l</sup> Cochran Esq<sup>r</sup> S.G.

*IN TESTIMONY* that the above is a copy of the original remaining on file in  
 the Department of Internal Affairs of Pennsylvania, made  
 conformably to an Act of Assembly approved the 16th day of  
 February, 1833, I have hereunto set my Hand and caused  
 the Seal of said Department to be affixed at Harrisburg,  
 this twenty ninth day of March 1905

*Loac B. [Signature]*  
 Secretary of Internal Affairs.